

CTH4 355 T4 0,55kW (278350106)

GENERAL DATA



ROOF FAN, VERTICAL DISCHARGE

MANUFACTURING FEATURES

- Fan made of steel with polyester powder finishing coat.
 - High efficiency backward impeller with self-cleaning system of steel.
 - Standard asynchronous motor with IP-55 protection and Class F insulation.
- Manufactured with standard voltages: 400V 50Hz three phase motors

APPLICATIONS

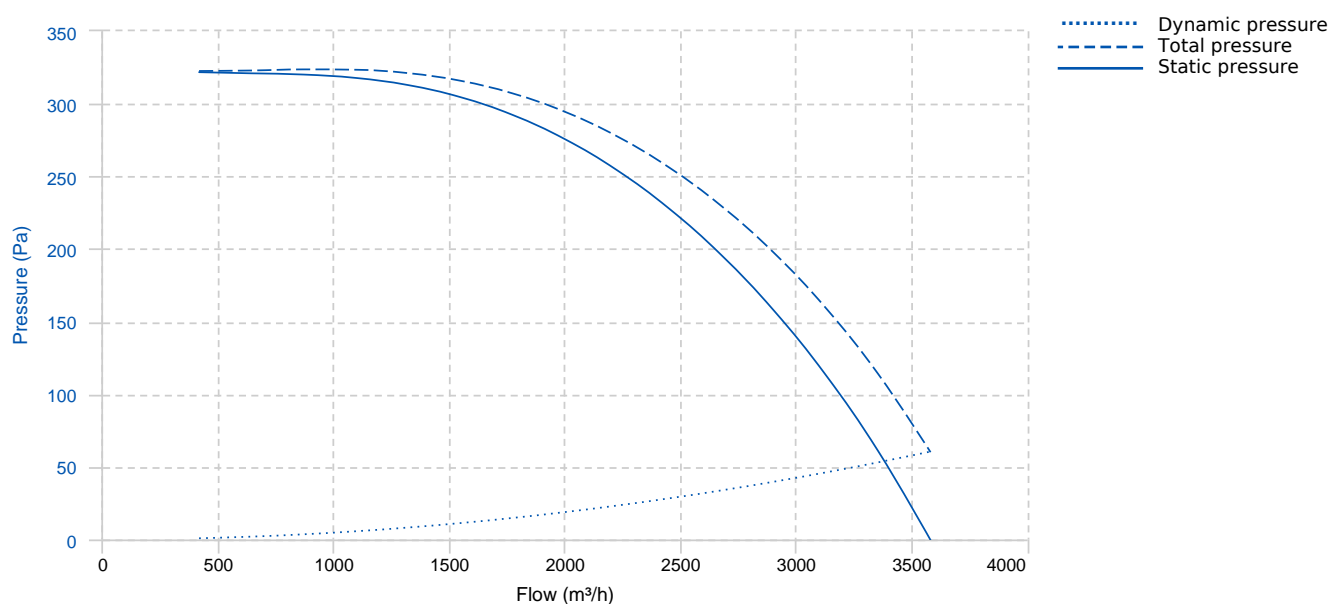
Specially designed for roof installation, with vertical discharge without any additional kit, they are suitable for:

- Smoke extraction
- Air renewal in buildings and industries.
- Industrial and professional kitchen hoods.
- Maximum continuous operation temperature: 80°C (fluide).
- Maximum ambient temperature: 50°C.
- Cinemas.

UNDER REQUEST

- Version made of inox 304/316.
- Finishing C4-C5.
- Special voltages.

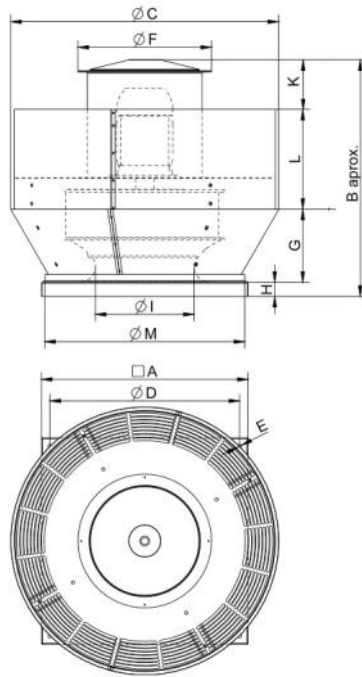
PERFORMANCE CURVE



TECHNICAL DATA

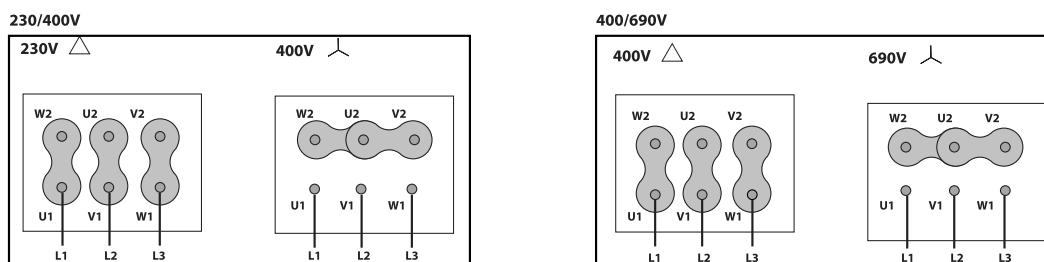
Fan							
RPM	1440	Approx. weight	20 kg	Max. Flow	3590 m ³ /h		
Motor							
Power	0,55 kW	RPM	1440	I max. (230V)	2,57 A	I max. (400V)	1,49 A
Size	80	Approx. weight	9 kg	Efficiency (%)	73.5 %		

DIMENSIONS



Dimensions (mm)									
A	500	B	582.5	D	440	G	168	H	40
K	128	L	237	ØC	622.7	ØE	12	ØF	374
ØI	236	ØM	478						

WIRING DIAGRAM



ACCESSORIES



SAFETY SWITCH
INT 25 3P A
REF: INT253PA

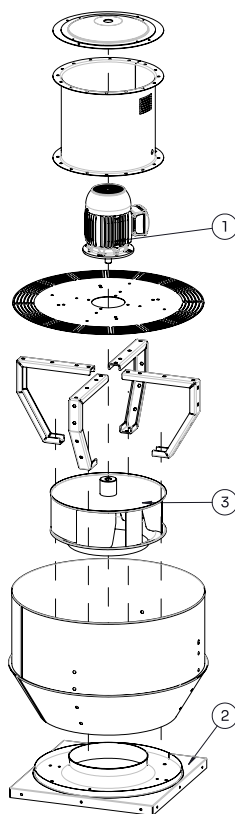


FREQUENCY SPEED CONTROLLER
SFC 230 I 4,2A *
REF: SFC230I004



FREQUENCY SPEED CONTROLLER
SFC 400 III 2,2A *
REF: SFC400III2

SPARE PARTS





	Code	Model	Qty
1	721001139	MOTOR 0,55kW T4 B5 230/400V	x1
3	R-279359381	IMPELLER THRE R63B1 355X112x19 RD	x1